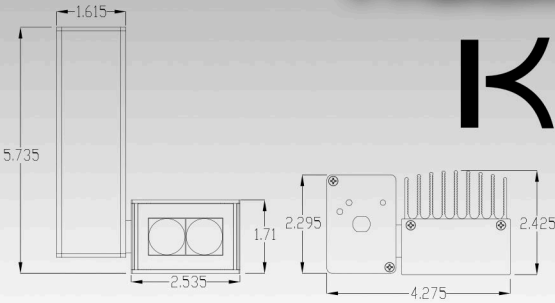
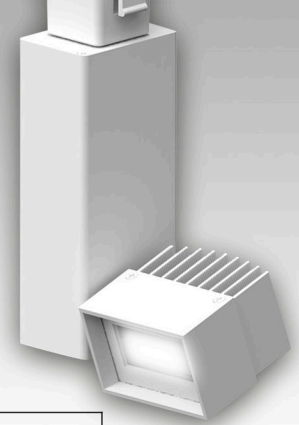
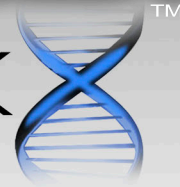


Track Lighting Fixture

KUBELUX

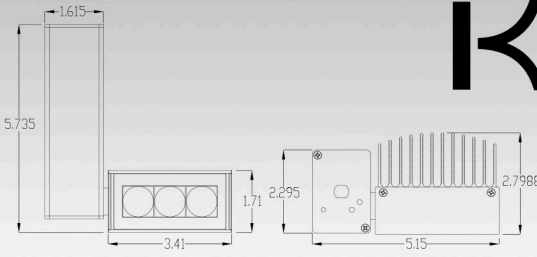
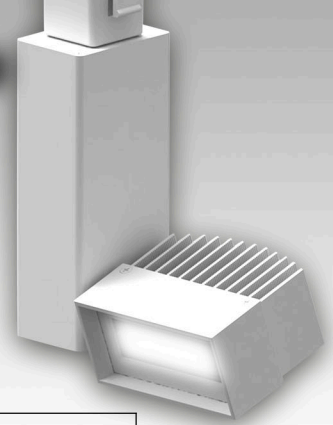
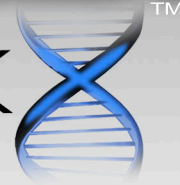


Light Cone Data

Light Fixture		K2TL			
Wattage		9.75			
REAL SPOT (R)					
Distance From Wall	2750K CBFC Max	3000K CBFC Max	3500K CBFC Max	50% CBFC Beam Diameter	
5.0'	281	322	355	11	
7.5'	104	131	148	16	
10.0'	59	71	82	21	
12.5'	38	47	54	27	
15.0'	27	34	39	32	
SMOOTH SPOT (S)					
Distance From Wall	2750K CBFC Max	3000K CBFC Max	3500K CBFC Max	50% CBFC Beam Diameter	
5.0'	158	180	197	14	
7.5'	69	80	87	21	
10.0'	39	45	49	28	
12.5'	25	29	32	35	
15.0'	18	21	23	42	
DIFFUSED (D)					
Distance From Wall	2750K CBFC Max	3000K CBFC Max	3500K CBFC Max	50% CBFC Beam Diameter	
5.0'	70	82	91	20	
7.5'	32	37	40	30	
10.0'	18	21	23	40	
12.5'	12	12	12	50	
15.0'	9	10	11	60	
MEDIUM (M)					
Distance From Wall	2750K CBFC Max	3000K CBFC Max	3500K CBFC Max	50% CBFC Beam Diameter	
5.0'	50	51	52	30	
7.5'	22	23	23	45	
10.0'	12	13	14	60	
12.5'	8	9	9	75	
15.0'	6	7	7	90	

Track Lighting Fixture

KUBELUX

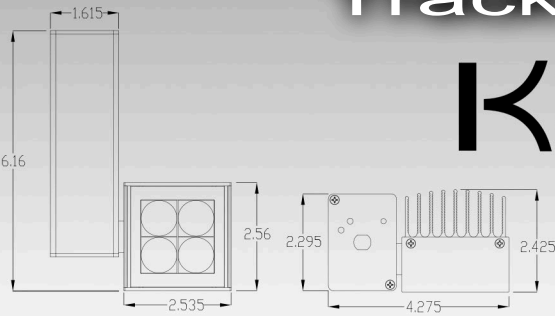
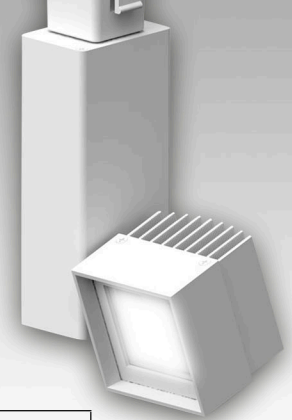
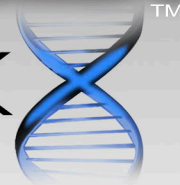


Light Cone Data

Light Fixture		K3TL			
Wattage		12.5			
REAL SPOT (R)					
Distance From Wall	2750K CBFC Max	3000K CBFC Max	3500K CBFC Max	50% CBFC Beam Diameter	
5.0'	456	481	500	11	
7.5'	198	211	220	16	
10.0'	112	119	126	21	
12.5'	71	77	81	27	
15.0'	50	55	58	32	
SMOOTH SPOT (S)					
Distance From Wall	2750K CBFC Max	3000K CBFC Max	3500K CBFC Max	50% CBFC Beam Diameter	
5.0'	241	272	300	14	
7.5'	108	120	131	21	
10.0'	60	68	74	28	
12.5'	40	45	48	35	
15.0'	28	32	35	42	
DIFFUSED (D)					
Distance From Wall	2750K CBFC Max	3000K CBFC Max	3500K CBFC Max	50% CBFC Beam Diameter	
5.0'	109	116	120	20	
7.5'	48	53	56	30	
10.0'	27	30	32	40	
12.5'	18	20	21	50	
15.0'	12	14	15	60	
MEDIUM (M)					
Distance From Wall	2750K CBFC Max	3000K CBFC Max	3500K CBFC Max	50% CBFC Beam Diameter	
5.0'	66	72	76	30	
7.5'	29	31	33	45	
10.0'	17	18	19	60	
12.5'	11	12	12	75	
15.0'	8	9	9	90	

Track Lighting Fixture

KUBELUX

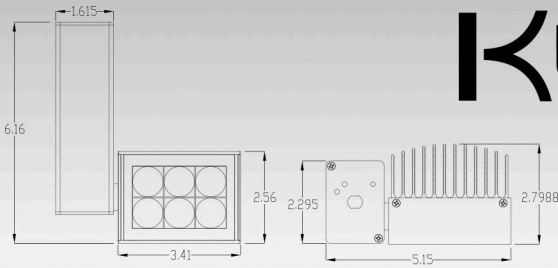
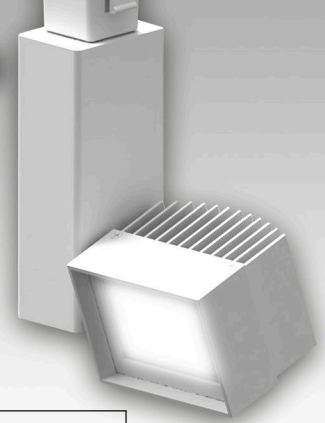
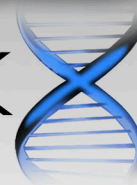


Light Cone Data

Light Fixture		K4TL			
Wattage		16			
REAL SPOT (R)					
Distance From Wall	2750K CBFC Max	3000K CBFC Max	3500K CBFC Max	50% CBFC Beam Diameter	
5.0'	615	640	662	11	
7.5'	270	284	294	16	
10.0'	150	158	162	21	
12.5'	95	100	104	27	
15.0'	66	73	79	32	
SMOOTH SPOT (S)					
Distance From Wall	2750K CBFC Max	3000K CBFC Max	3500K CBFC Max	50% CBFC Beam Diameter	
5.0'	363	421	470	14	
7.5'	162	181	194	21	
10.0'	89	102	111	28	
12.5'	57	66	71	35	
15.0'	42	48	51	42	
DIFFUSED (D)					
Distance From Wall	2750K CBFC Max	3000K CBFC Max	3500K CBFC Max	50% CBFC Beam Diameter	
5.0'	148	163	174	20	
7.5'	65	72	78	30	
10.0'	37	41	44	40	
12.5'	24	27	29	50	
15.0'	17	19	21	60	
MEDIUM (M)					
Distance From Wall	2750K CBFC Max	3000K CBFC Max	3500K CBFC Max	50% CBFC Beam Diameter	
5.0'	97	100	101	30	
7.5'	43	43	44	45	
10.0'	24	25	25	60	
12.5'	16	17	17	75	
15.0'	12	12	13	90	

Track Lighting Fixture

KUBELUX™

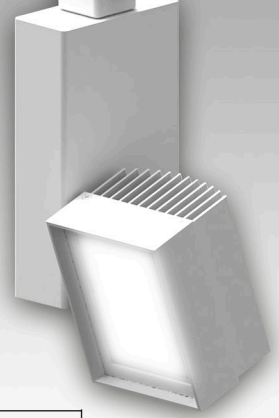
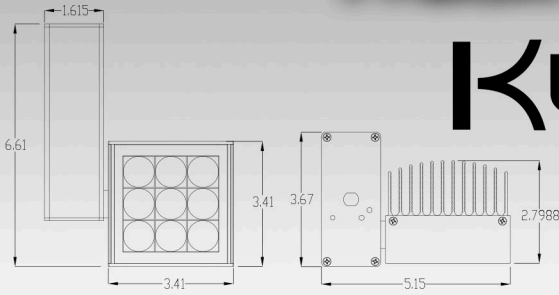
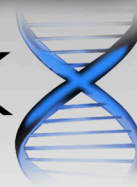


Light Cone Data

Light Fixture		K6TL			
Wattage		23			
REAL SPOT (R)					
Distance From Wall	2750K CBFC Max	3000K CBFC Max	3500K CBFC Max	50% CBFC Beam Diameter	
5.0'	892	322	894	11	
7.5'	388	131	420	16	
10.0'	217	71	233	21	
12.5'	135	47	152	27	
15.0'	99	34	105	32	
SMOOTH SPOT (S)					
Distance From Wall	2750K CBFC Max	3000K CBFC Max	3500K CBFC Max	50% CBFC Beam Diameter	
5.0'	590	637	655	14	
7.5'	265	284	290	21	
10.0'	146	151	157	28	
12.5'	94	100	102	35	
15.0'	67	72	74	42	
DIFFUSED (D)					
Distance From Wall	2750K CBFC Max	3000K CBFC Max	3500K CBFC Max	50% CBFC Beam Diameter	
5.0'	222	241	250	20	
7.5'	97	104	108	30	
10.0'	55	57	62	40	
12.5'	35	38	40	50	
15.0'	27	29	30	60	
MEDIUM (M)					
Distance From Wall	2750K CBFC Max	3000K CBFC Max	3500K CBFC Max	50% CBFC Beam Diameter	
5.0'	137	139	140	30	
7.5'	60	63	64	45	
10.0'	34	36	37	60	
12.5'	22	24	24	75	
15.0'	16	18	18	90	

Track Lighting Fixture

KUBELUXTM

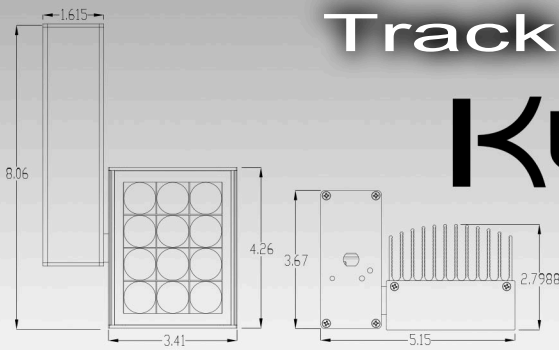
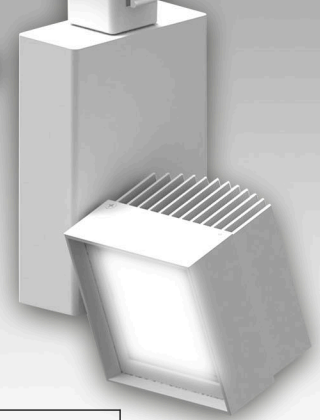
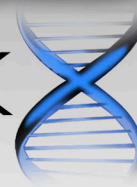


Light Cone Data

Light Fixture		K9TL			
Wattage		34			
REAL SPOT (R)					
Distance From Wall	2750K CBFC Max	3000K CBFC Max	3500K CBFC Max	50% CBFC Beam Diameter	
5.0'	1315	1367	1398	11	
7.5'	582	606	620	16	
10.0'	324	342	350	21	
12.5'	200	217	224	27	
15.0'	146	155	161	32	
SMOOTH SPOT (S)					
Distance From Wall	2750K CBFC Max	3000K CBFC Max	3500K CBFC Max	50% CBFC Beam Diameter	
5.0'	900	961	998	14	
7.5'	395	422	442	21	
10.0'	220	236	248	28	
12.5'	142	152	160	35	
15.0'	103	109	114	42	
DIFFUSED (D)					
Distance From Wall	2750K CBFC Max	3000K CBFC Max	3500K CBFC Max	50% CBFC Beam Diameter	
5.0'	334	369	386	20	
7.5'	145	151	164	30	
10.0'	83	89	95	40	
12.5'	53	57	60	50	
15.0'	41	43	46	60	
MEDIUM (M)					
Distance From Wall	2750K CBFC Max	3000K CBFC Max	3500K CBFC Max	50% CBFC Beam Diameter	
5.0'	214	226	238	30	
7.5'	93	99	105	45	
10.0'	52	55	58	60	
12.5'	34	36	38	75	
15.0'	25	28	30	90	

Track Lighting Fixture

KUBELUX™



Light Cone Data

Light Fixture		K12TL			
Wattage		46.5			
REAL SPOT (R)					
Distance From Wall	2750K CBFC Max	3000K CBFC Max	3500K CBFC Max	50% CBFC Beam Diameter	
5.0'	1730	1872	1950	11	
7.5'	772	841	880	16	
10.0'	420	461	490	21	
12.5'	270	297	318	27	
15.0'	182	205	224	32	
SMOOTH SPOT (S)					
Distance From Wall	2750K CBFC Max	3000K CBFC Max	3500K CBFC Max	50% CBFC Beam Diameter	
5.0'	1030	1153	1258	14	
7.5'	462	521	570	21	
10.0'	259	291	314	28	
12.5'	164	187	203	35	
15.0'	118	136	145	42	
DIFFUSED (D)					
Distance From Wall	2750K CBFC Max	3000K CBFC Max	3500K CBFC Max	50% CBFC Beam Diameter	
5.0'	439	492	530	20	
7.5'	190	208	220	30	
10.0'	108	121	127	40	
12.5'	68	77	83	50	
15.0'	50	57	60	60	
MEDIUM (M)					
Distance From Wall	2750K CBFC Max	3000K CBFC Max	3500K CBFC Max	50% CBFC Beam Diameter	
5.0'	256	270	280	30	
7.5'	119	126	129	45	
10.0'	64	70	73	60	
12.5'	43	45	47	75	
15.0'	32	33	34	90	