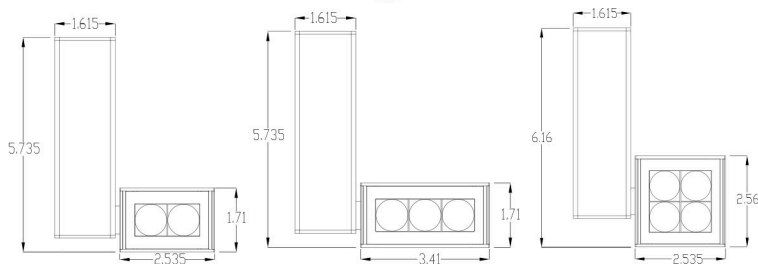


## Kubeluxx® TRACK SERIES



**10yr**  
Warranty



### PRODUCT DESCRIPTION:

This ElectraLED track light series is designed for elite performance and appeal. The variety of different sized track heads in the Kubeluxx™ series allows the fixture to be very versatile in its application capabilities.

### FEATURES:

- Complete family of track heads from 10 to 48 watts
- All Color Temps available 2700K-5000K (CCT)
- State of the art LED and optical system
- Multiple beam options
- Optimized for all conditions
- Life rating: 75,000 hrs (L70)
- High performance heat sink
- Available in black, white, silver and custom colors
- Robust construction
- Full range of motion
- Optional dimming available

### APPLICATIONS:

- Retail, Commercial, Accent & Display Lighting

### COMPLIANCE & SAFETY:



### PERFORMANCE:

	K2TL	K3TL	K4TL
Voltage (VAC)	120-277	120-277	120-277
Input (Watts)	9.6	12.5	16.3
Power Factor	>0.9	>0.9	>0.9

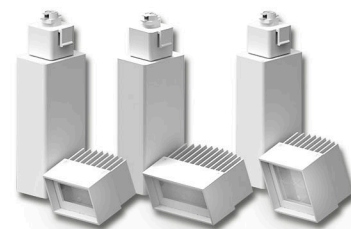
### LUMEN OUTPUT:

CCT(K)	K2TL	K3TL	K4TL
2700	548	822	1,095
3000	581	872	1,163
3500	618	927	1,236
4000	659	988	1,317
5000	699	1,049	1,399

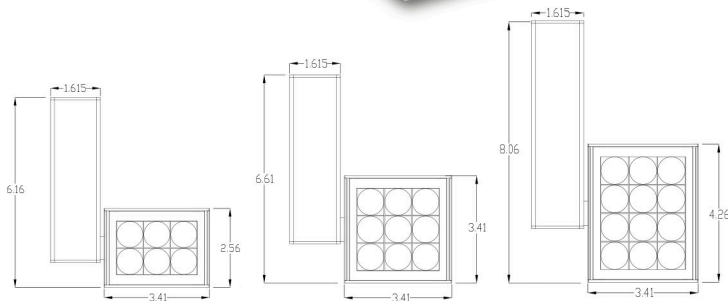
### ORDERING GUIDE:

Example: K2TL-35BD

Model	CCT(K)	Finish	Lens Configuration	Options
K2TL	27 = 2700	B = Black	R = 12° Real Spot	H1= High CRI (90+)
K3TL	30 = 3000	W = White	S = 16° Smooth Spot	D = Dimming
K4TL	35 = 3500	S = Silver	D = 25° Diffused	
	40 = 4000	C = Custom	M = 40° Wide	
	50 = 5000		O = 42°X14° Oval	



## Kubeluxx® TRACK SERIES



### PRODUCT DESCRIPTION:

This ElectraLED track light series is designed for elite performance and appeal. The variety of different sized track heads in the Kubeluxx™ series allows the fixture to be very versatile in its application capabilities.

### FEATURES:

- Complete family of track heads from 10 to 48 watts
- All Color Temps available 2700K-5000K (CCT)
- State of the art LED and optical system
- Multiple beam options
- Optimized for all conditions
- Life rating: 75,000 hrs (L70)
- High performance heat sink
- Available in black, white, silver and custom colors
- Robust construction
- Full range of motion
- Optional dimming available

### APPLICATIONS:

- Retail, Commercial, Accent & Display Lighting

### COMPLIANCE & SAFETY:



### PERFORMANCE:

	K6TL	K9TL	K12TL
Voltage (VAC)	120-277	120-277	120-277
Input (Watts)	21.6	29.0	49.1
Power Factor	>0.9	>0.9	>0.9

### LUMEN OUTPUT:

CCT(K)	K6TL	K9TL	K12TL
2700	1,643	2,465	3,286
3000	1,744	2,616	3,488
3500	1,853	2,780	3,707
4000	1,976	2,963	3,951
5000	2,098	3,147	4,196

### ORDERING GUIDE:

Example: K6TL-35BD

Model	CCT(K)	Finish	Lens Configuration	Options
K6TL	27 = 2700	B = Black	R = 12° Real Spot	H1= High CRI (90+)
K9TL	30 = 3000	W = White	S = 16° Smooth Spot	D = Dimming
K12TL	35 = 3500	S = Silver	D = 25° Diffused	
	40 = 4000	C = Custom	M = 40° Wide	
	50 = 5000		O = 42°X14° Oval	

